

Low-voltage high current / High-voltage connection in box solution

Low voltage and high current connector

The low voltage and high current connector on electric vehicle is mainly used in the low-voltage automotive fuse box and small battery of the vehicle to transmit large power for the low-voltage equipment. The voltage ranges from 12V to 48V and the current ranges from 20A to 200A.

With the development of automotion and function diversification on vehicles, the low voltage power circuits on vehicle become more and more, Recodeal design many kinds of low voltage and high current connectors to meet the vehicle's connection requirements.

High voltage connection system in the box:

With the continuous development of integration on new energy vehicles, the high-voltage connections outside the box are further decreased, and the connections inside the box are further increased. High voltage connection system in the box is generally used for battery pack, multi-in-one and other equipment;

Recodeal provide a comprehensive high voltage connection solution for electric vehicles;

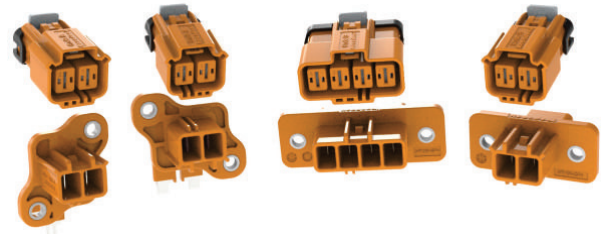
The main products include: busbar (hard copper bar/soft copper bar) : mainly used for battery pack, multi-in-one, PDU/BDU and other equipment;



REV series 2/4POS High voltage plastic connectors

Description

- 2 POS & 4 POS
- Plastic Shell
- Anti-mistouch design (IPXXB)
- Cable Range: 4mm²--6mm²
- Rated current: 30A (For 4mm² Cables) ;
40A (For 6mm² Cables)
- Rated voltage: 1000V DC;
- Working temperature: -45°C~125°C;
- Unshielded, Non-HVIL, no protection function;
- Mainly used for connection inside the equipment box;



Ordering Information

Socket

REV - T 4 B - 6 - A

Extended Model

Connect to 6mm² unshielded cable, solder plate type unmarked

Key Position: A, B

Number of POS: 4

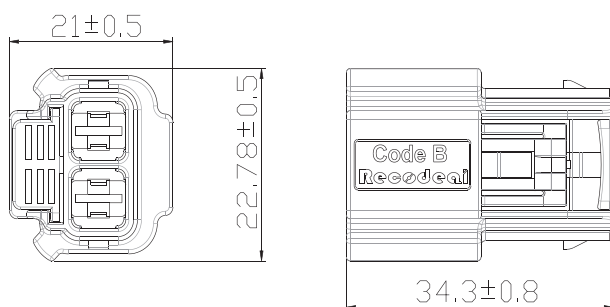
Z: Plug, T: Socket

REV series connector

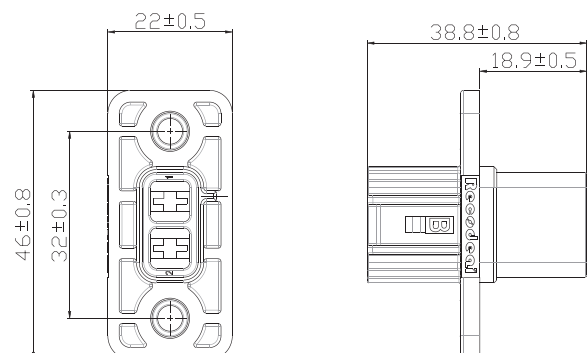
The connector plug generated according to the naming rules does not contain power terminals, and the socket does not contain power & HVIL terminals.

Dimensions

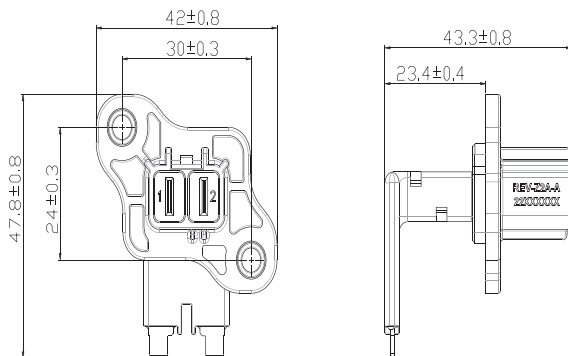
2POS Plug



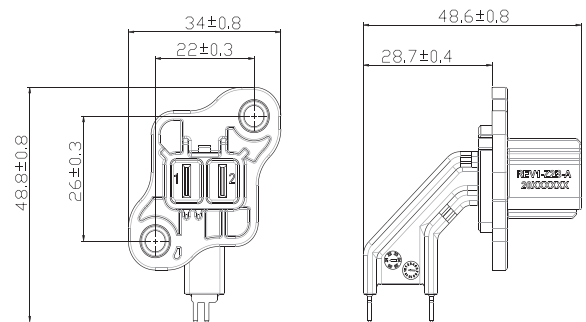
2POS socket



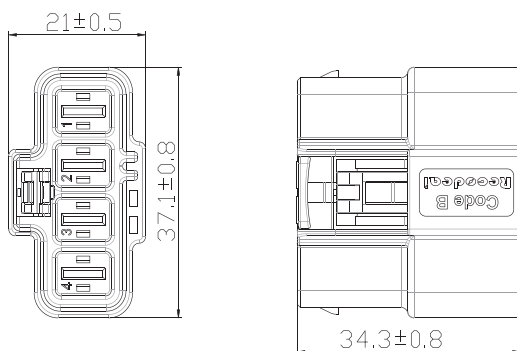
2POS socket - solder plate end 1



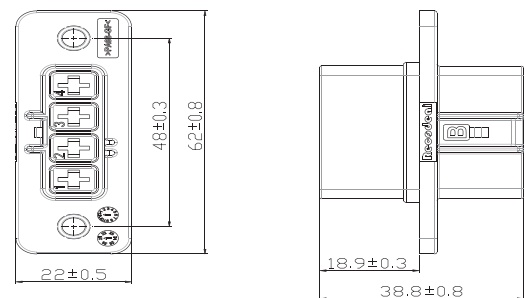
2POS socket - solder plate end 2



4POS plug



4POS socket



16POS 30A low voltage connector

Description

- 16 POS
- Plastic Shell
- Anti-misplug Key Position: A, B
- Cable Range: 2.5mm²--6mm²
- Rated current: 30A
- Rated voltage: 48V DC;
- Working temperature: -45°C~125°C;
- Unshielded, Non-HVIL, no protection function;
- Mainly used for the connection of all-in-one internal, DC/DC, low-voltage fuse boxes and other equipment;
- Contact specification: 14.5*1.8mm;



Commonly used material

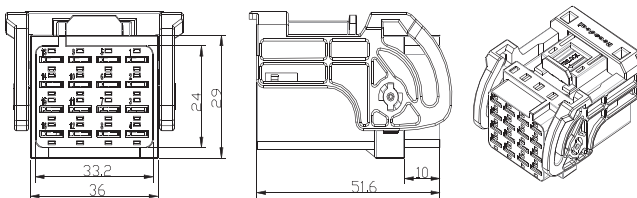
No.	Product name	Product code	Note
1	16 Pin 30A plug A key position	3.653.508029	Applicable Cable 4 square / 6 square
2	16 Pin 30A plug B key position	3.653.508029.01	Applicable Cable 4 square / 6 square
3	16 Pin 30A straight socket A key position	3.663.508034	Use with 16 Pin 30A plug A key position
4	16 Pin 30A straight socket B key position	3.663.508034.01	Use with 16 Pin 30A plug B key position
5	16 Pin 30A angled socket A key position	3.663.508037	Use with 16 Pin 30A plug A key position
6	16 Pin 30A angled socket B key position	3.663.508037.01	Use with 16 Pin 30A plug B key position

Note:

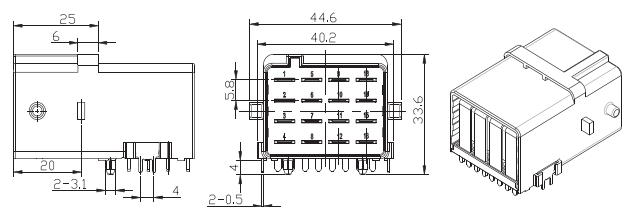
1. This series of connectors has two keys, A and B.
2. The cable end of this series of products is suitable for 4mm² and 6mm². The cable end terminal adopts the riveting production process, and the board end adopts the through-hole reflow soldering process.

Dimensions

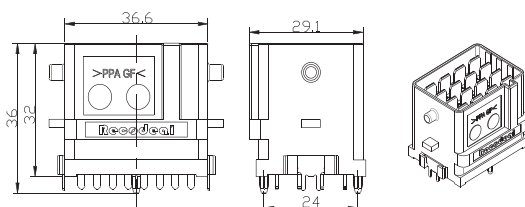
Plug



Angled Socket



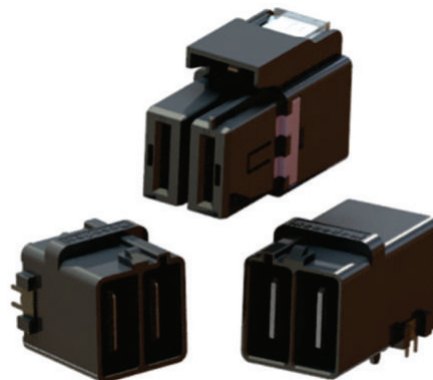
Straight socket



2POS 200A low voltage connector

Description

- 2 POS;
- Plastic Shell;
- Anti-misplug Key Position: A, B;
- Cable Range: 35mm²--50mm²;
- Rated current: 200A;
- Rated voltage: 48V DC;
- Working temperature: -45°C~125°C;
- Unshielded, Non-HVIL, no protection function;
- Mainly used for the connection of all-in-one internal, DC/DC, low-voltage fuse boxes and other equipment;
- Contact specification: 14.5*1.8mm;



Commonly used material

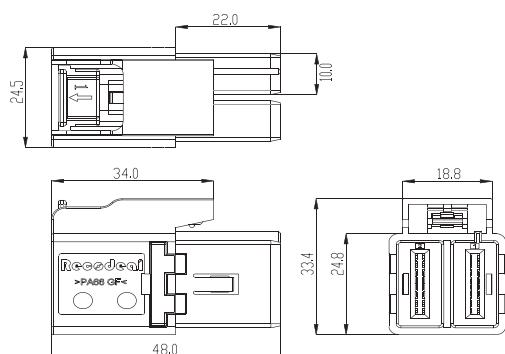
No.	Product name	Product code	Note
1	2 Pin 200A plug A key position	3.653.508030	Applicable Cable 35 square / 50 square
2	2 Pin 200A plug B key position	3.653.508030.01	Applicable Cable 35 square / 50 square
3	2 Pin 200A straight socket A key position	3.663.508036	Use with 2 Pin plug A key position
4	2 Pin 200A straight socket B key position	3.663.508036.01	Use with 2 Pin plug B key position
5	2 Pin 200A angled socket A key position	3.663.508035	Use with 2 Pin plug A key position
6	2 Pin 200A angled socket A key position	3.663.508035.01	Use with 2 Pin plug B key position

Note:

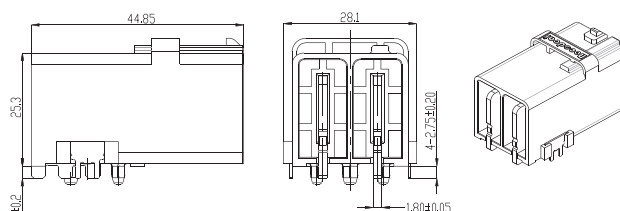
1. This series of connectors has two keys, A and B.
2. The cable end of this series of products is suitable for 35mm² and 50mm². The cable end terminal adopts two production processes of riveting and ultrasonic welding, and the board end adopts the through-hole reflow soldering process.

Dimensions

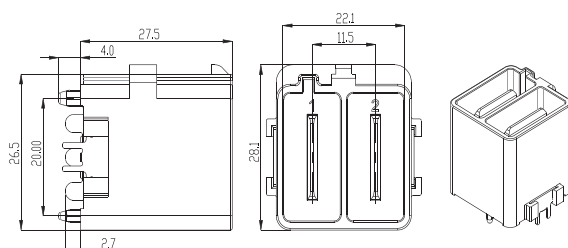
Plug



Angled solder plate socket



Straight solder plate socket



2POS terminal socket

Description

- 2 POS;
- Plastic Shell;
- Rated current: 150A;
- Rated voltage: 1500V DC;
- Working temperature: -45°C~125°C;
- Temperature rise: $\leq 30K$;



Ordering Information

Socket

R E V H 2 P 2 1 0 0 A - Z C B K - A S 8 - A

Extended Model

AS8: Axial threaded hole M8

BK: Black

ZC: Cross wall Terminal

A: Product Series A

2100: Width of the busbar: 21mm

P: Plastic Shell

2: 2 POS

H: High Voltage

EV: New energy vehicle

R: RECODEAL

Dimensions

