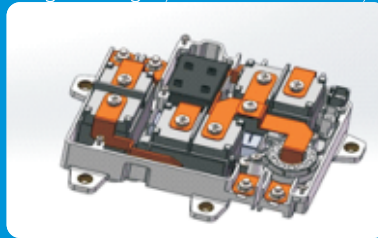


High Voltage Power Distribution Unit (PDU) Solution

- High voltage power distribution Unit is mainly used for high voltage power distribution of electric vehicles, and the battery electric energy is transmitted to various electric equipment of automobile, such as: air conditioning refrigeration heating, motor, defrosting, steering, battery heating, AC/DC、DC/DC and so on. internally integrated relays, fuses, diodes, power resistors, BMS modules, etc.
- Different solutions can be provided according to customer models and installation locations.

BDUseries

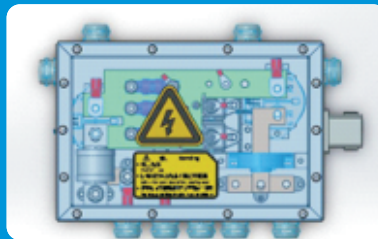
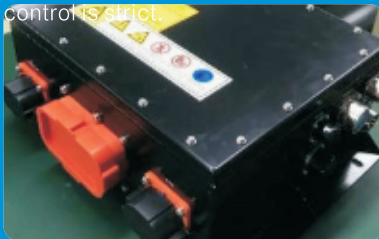
BDU Integrated in the battery box, due to the limitation of battery box space, the general shape is irregular, the shell processing adopts engineering plastics with good impact and high strength, such as PA66ABS, etc.



System rated voltage: 750V
 System rated power: 50KW
 Device Voltage: $\geq 2500V$
 Relay voltage: 12V
 working temperature : $-40^{\circ}C-130^{\circ}C$
 Protection Degree: (Based on customer requirements)

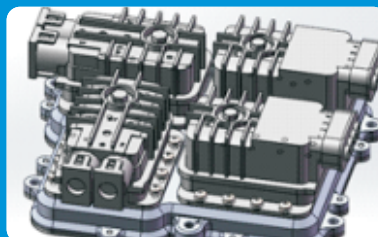
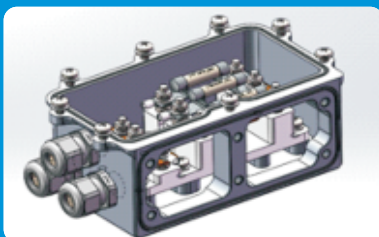
Microcar Series

The size of the whole car is small, the number of passengers is more than 2, so the weight of the car is not very large, the battery power requirements are not high, suitable for short distance use. Its PDU circuit is relatively simple, the volume requirement is small, and the cost controls strict.



Voltage Rating: 100V
 Power rating : 20KW
 Device Voltage: $\geq 1000V$
 Relay voltage: 12V
 working temperature: $-40^{\circ}C-130^{\circ}C$
 Protection Degree: IP67

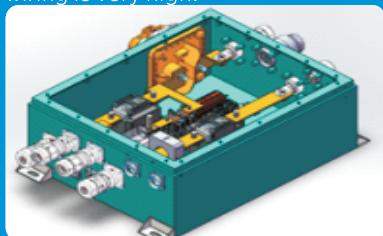
Small passenger car series



Voltage Rating: 400V以上 **Over 400V**
 power rating : 80KW
 Device Voltage: $\geq 2500V$
 Relay voltage: 12V
 working temperature: $-40^{\circ}C-125^{\circ}C$
 Protection Degree: IP67

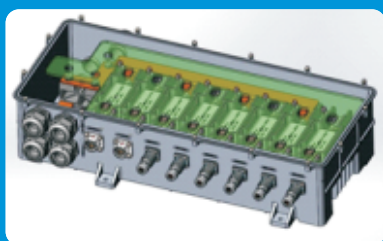
SUVseries

Most of the SUV models integrate the BMS into the high-voltage box, the internal wiring is complex, and the cleanliness of the internal wiring is very high.



Voltage Rating: 750V
power rating: 110KW
Device Voltage: $\geq 2500V$
Relay voltage: 24V/12V
working temperature: $-40^{\circ}C-130^{\circ}C$
Protection Degree: IP67

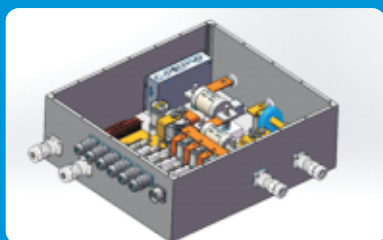
Bus Series



Voltage Rating: 800V以上
power rating: 200KW
Device Voltage: $\geq 3000V$
Relay voltage: 24V
working temperature: $-40^{\circ}C-130^{\circ}C$
Protection Degree: IP67

Over 800V

Mining vehicles, garbage trucks, logistics vehicles and other models



Voltage Rating: 800V or above
power rating: 280KW
Device Voltage: $\geq 3000V$
Relay voltage: 24V
working temperature: $-40^{\circ}C-130^{\circ}C$
Protection Degree: IP67